



Comparing Passerine Presence in an Urban College Town to a Nearby Rural Marsh Sanctuary



Jocelyn Lucente jl572@humboldt.edu Cal Poly Humboldt, Arcata CA 95521

Introduction

- Passerines are found across a vast variety of landscapes
- Rapidly expanding urbanization poses uncertainty for adaptive success

Objective:

To compare passerine counts across urban and rural environments

Hypothesis:

There will be a higher passerine count in rural environments.

Study Area

- Urban sites within Arcata city, CA
- Rural sites within the Arcata Marsh and Wildlife Sanctuary (AMWS), CA

Citations Blue Sky with Clouds Freepik n.d.
Raven PNG Mart n.d. Sparrow PNG Arts n.d.

Results

- Higher passerine count at urban sites (n=203) than at rural sites (n=167) ($P=0.43$) (Fig 1.)
- Passerine presence had a positive relationship with human presence (Fig 2.) and a negative relationship with car presence (Fig 3.).

Fig 1. On average, fewer passerines were observed at rural sites (n=11.13) than at urban sites (n=13.53).

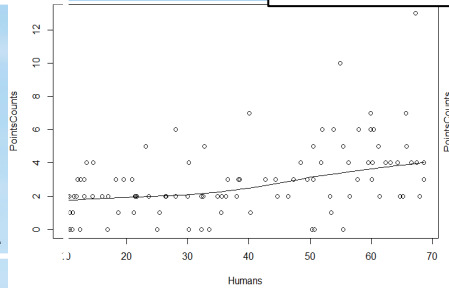
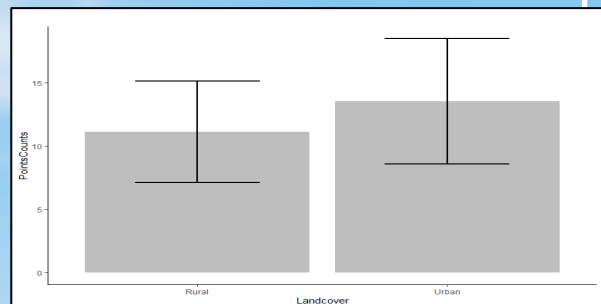


Fig 2. Passerine abundance increases as humans increases

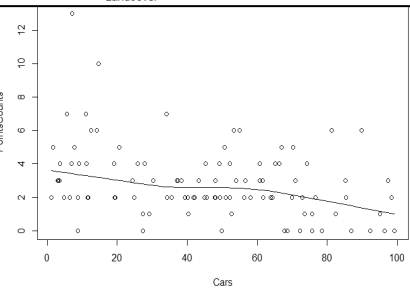


Fig 3. Passerine abundance decreases as cars increase

Field Methods

- Conducted standardized point-counts (Ralph 1995 USDA) at 15 urban and 15 rural randomly selected sites (n=30)
- Noted human and car presence
- Midday hours in February-April 2023

Discussion

- Hypothesis was rejected
- Perhaps passerines are shifting to exploit anthropogenic resources
- Further studies might consider species

Management

- Monitor urbanization impacts
- Replicate study for endangered passerine species

Acknowledgements Thank you to Dr. David Sinn for overlooking this study.