

# Greenwood Cemetery

The multifaceted relationship between geospatial science, religious studies, and history comes together at the cemetery.

There are many opportunities to utilize these skills, for example:

- Using GPS to map out the locations of gravestones
- Creating a digital map that is interactive
- Studying the connection between the living and the dead
- Researching the history of the families of Arcata

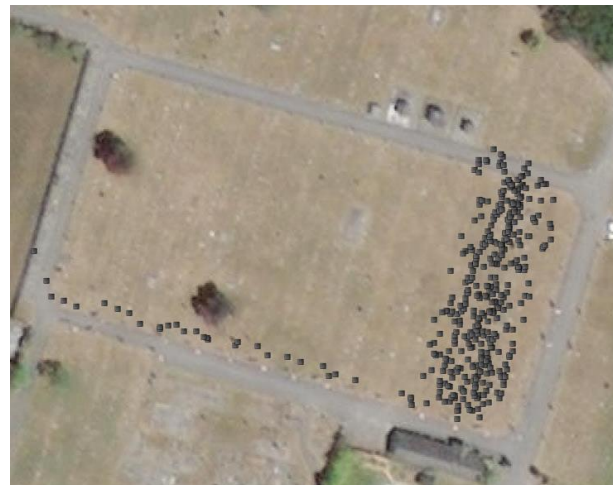


Families of Arcata  
Historical text/photos of  
Families of influence....

pending

**Rough Draft**

Map of cemetery



Memorial day



Ashley Miller and Randall Starba



Dr. Sara Hart's class meets weekly to clean gravestones