

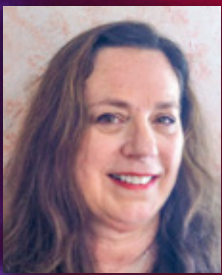
Second Annual Speaker Series Presents

# The Times are Changing: Preliminary Findings from a San Francisco Study of Baby Boomers and Marijuana Use

**Tuesday, February 4  
5:30-7:00 pm**

Humboldt State University  
BSS 162 Native Forum

How do Baby Boomers manage their marijuana consumption as they get older? As political and social contexts change, what are the health and social consequences for users? This presentation reports emerging themes from 50 interviews conducted with marijuana users in San Francisco. These data have been collected as part of a larger National Institutes of Health funded investigation into the use patterns and perceptions of Baby Boomer marijuana users.



**Sheigla Murphy, PhD** is the Director of the Center for Substance Abuse Studies at the Institute for Scientific Analysis. Dr. Murphy is a medical sociologist who has been researching various types of illicit drug use,

violence, medical and drug treatment for more than thirty years. She has been the principal investigator of nine National Institute of Health grants.

**FOR MORE INFORMATION**

Josh Meisel, Co-Director  
Humboldt Institute for  
Interdisciplinary  
Marijuana Research  
707.826.4446  
meisel@humboldt.edu

**SPONSORED BY**

College of Arts, Humanities and Social Sciences  
College of Natural Resources and Sciences  
College of Professional Studies

Persons who wish to request disability related accommodations should contact the event organizer at 826.4446, as soon as possible.

HSU is an AA/EO institution.



[humboldt.edu/hiimr](http://humboldt.edu/hiimr)